



Stucchi[®]



MULTI-COUPLING PLATES



MP Series Hydraulic Multi-Coupling Plate



Multi-Coupling Plate

The multi-coupling plate is a tool allowing the simultaneous couple and uncouple of a certain number of hydraulic and/or electrical lines. From a minimum of two to a maximum of ten lines can be simultaneously connected by a single, simple movement requiring very little force.

The energy lines can all have the same nominal diameter or each line can be different from the others according to the application. A special multi-coupling plate version provided with electrical connector can be supplied.

- Connects with residual pressure
- Mechanical connection eliminates brinelling effect
- Safety lock prevents unwanted disconnection
- Simple to use with a single movement applied by one arm only
- Ease of maintenance or replacement of quick couplings
- Cap and parking station available

Overview

- Front end loaders
- Harvesting equipment
- Construction machinery
- Refrigeration
- Snow removal equipment
- Energy sector
- Any application requiring connection under residual pressure of multiple couplings

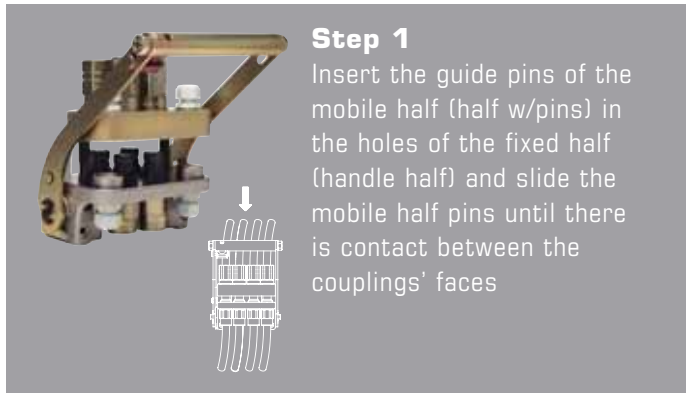
Features

- Connect up to 25 MPa/ 3625 psi residual pressure
- Auto safety lock when connected
- Single hand operation
- Compact design
- Flat face couplers eliminate leakage
- Flat face couplers reduce contamination
- Guide mechanism eliminates cross connecting circuits

Technical Characteristics & Instructions for Use

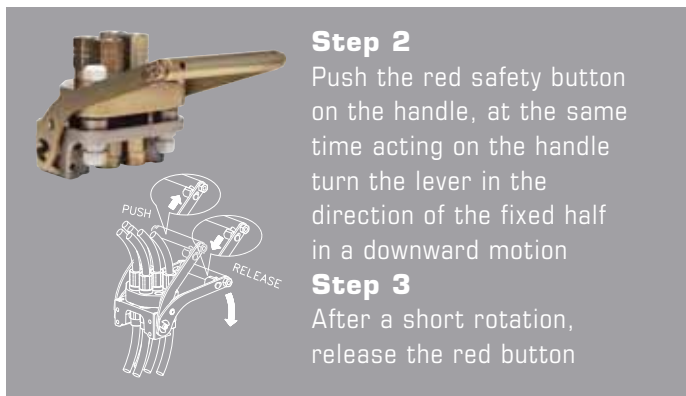
GR Multi-Coupling Plate

To Connect:



Step 1

Insert the guide pins of the mobile half (half w/pins) in the holes of the fixed half (handle half) and slide the mobile half pins until there is contact between the couplings' faces

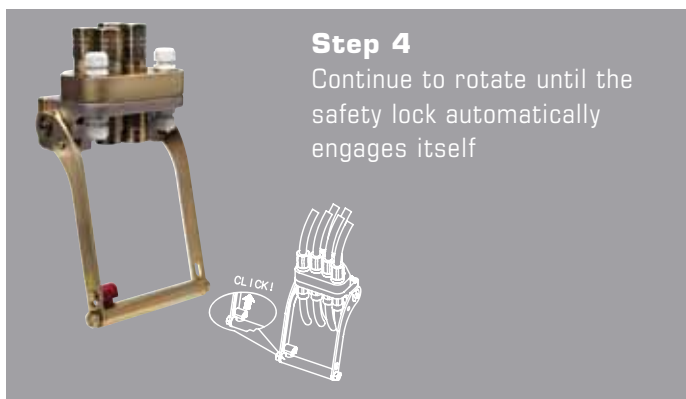


Step 2

Push the red safety button on the handle, at the same time acting on the handle turn the lever in the direction of the fixed half in a downward motion

Step 3

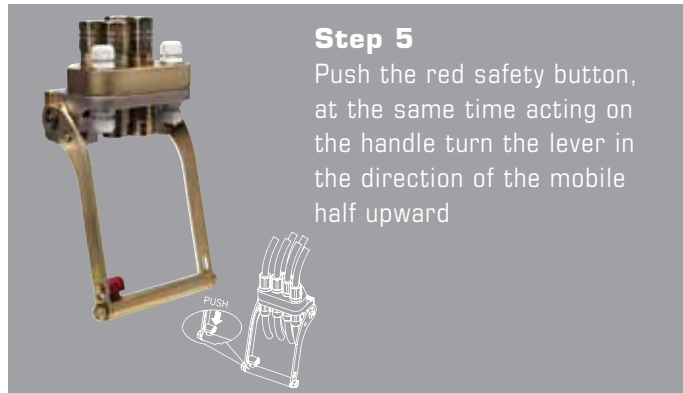
After a short rotation, release the red button



Step 4

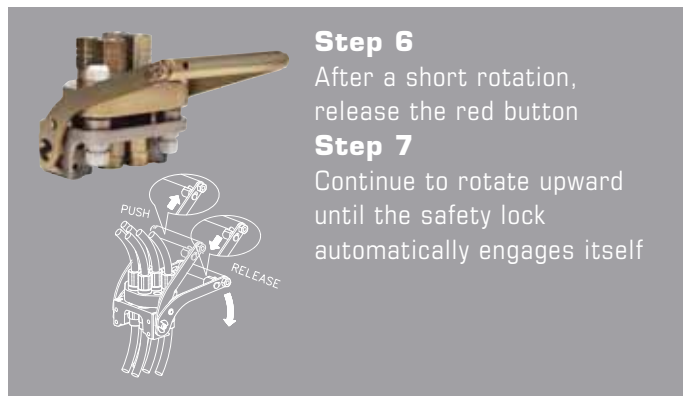
Continue to rotate until the safety lock automatically engages itself

To Disconnect:



Step 5

Push the red safety button, at the same time acting on the handle turn the lever in the direction of the mobile half upward

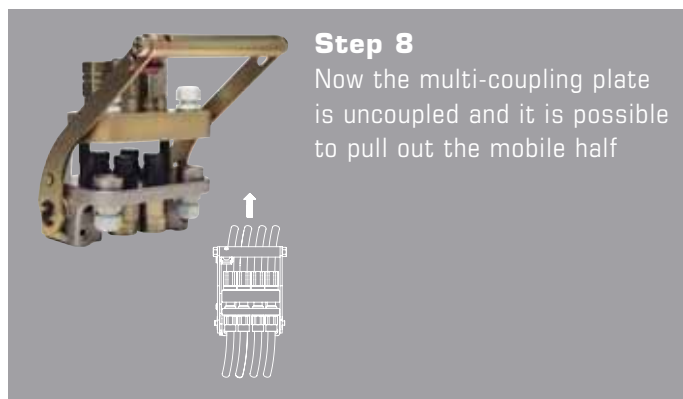


Step 6

After a short rotation, release the red button

Step 7

Continue to rotate upward until the safety lock automatically engages itself



Step 8

Now the multi-coupling plate is uncoupled and it is possible to pull out the mobile half

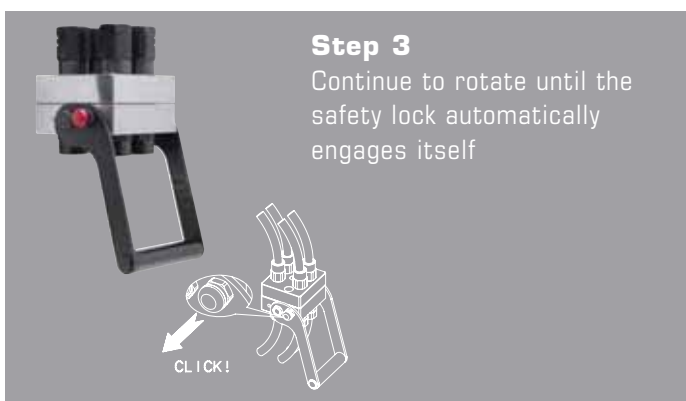
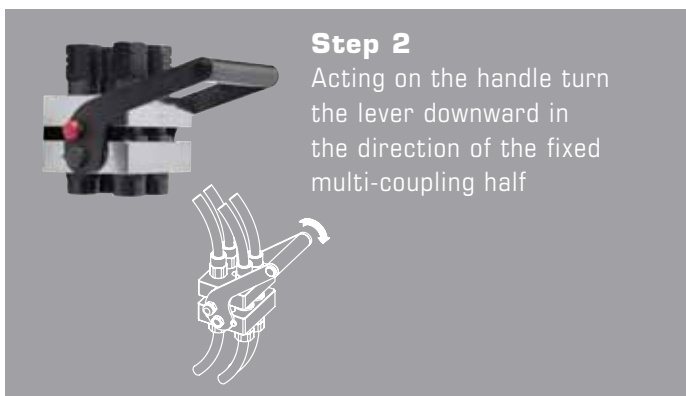
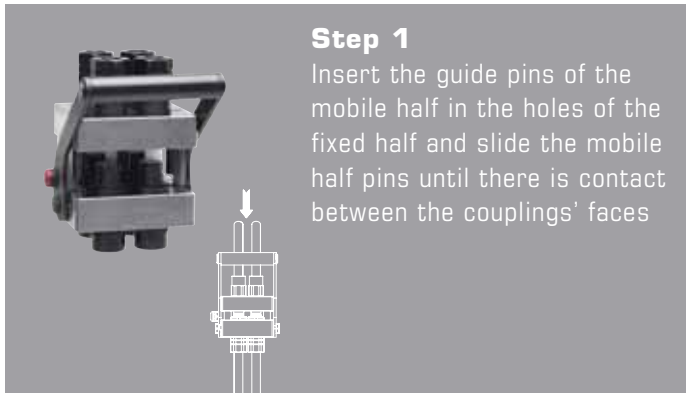
WARNING!

- Do not force the lever without pushing the red safety button
- Do not use extensions or other tools to ease the rotating of the lever
- Do not connect the fixed half with the mobile half if dirt or other material is between them
- When the multi-coupling is disconnected, it is suggested to use the dust cover for the fixed half and the parking station for the mobile half

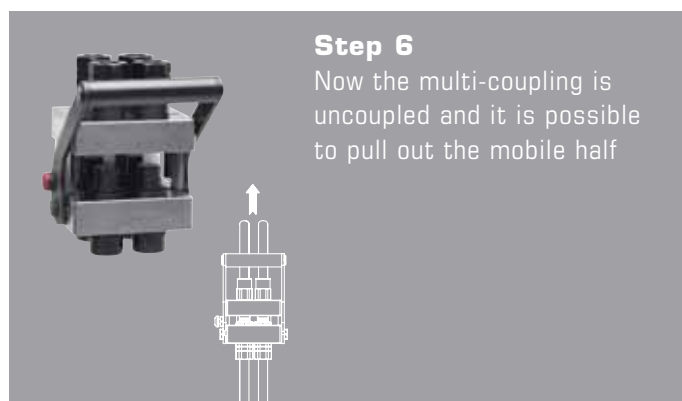
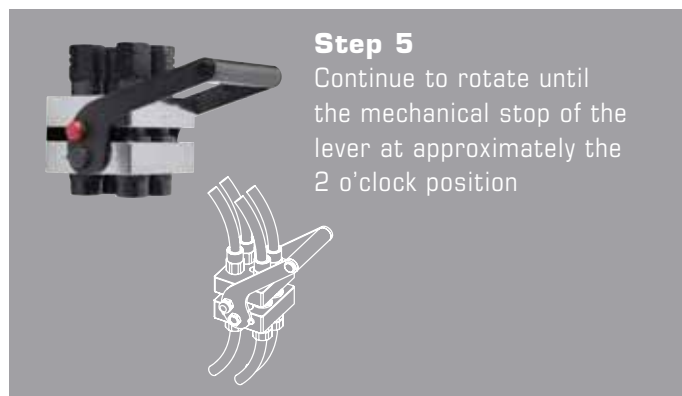
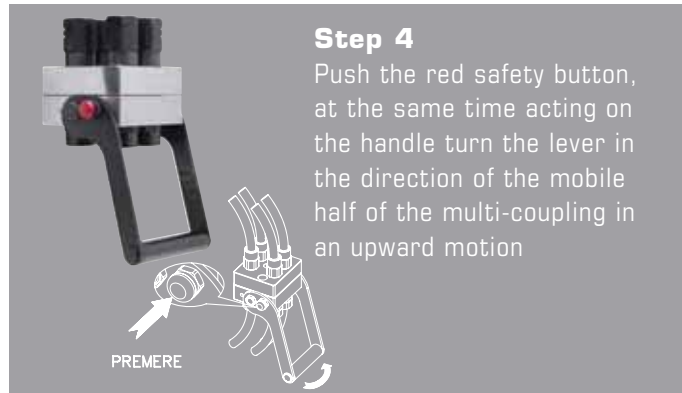
Technical Characteristics & Instructions for Use

DP Multi-Coupling Plate

To Connect:



To Disconnect:



WARNING!

- Do not force the lever without pushing the red safety button
- Do not use extensions or other tools to ease the rotating of the lever
- Do not connect the fixed half with the mobile half if dirt or other material is between them
- When the multi-coupling is disconnected, it is suggested to use the dust cover for the fixed half and the parking station for the mobile half



Stucchi[®]



Stucchi | 1107 Windham Parkway | Romeoville, IL 60446 USA | 847.956.9720 | fax 847.956.9723 | www.stucchiusa.com
Stucchi Inc, Canada Warehouse | 6300 Viscount Road, Unit 1A | Mississauga, ON L4V 1H3



Stucchi[®]



SATURN BLOCK



Saturn Block



Saturn Block

Technical Features & Options

- Interchangeability of couplings: equipped with ISO 16028 couplings size 1/2, 5/8, and 3/4 inch. Drain line is ISO 16028 size 3/8 or 1/2 inch male
- Couplings type: flat face
- Connection system: push to connect
- Disconnection system: pulling back the sleeve of the female coupling
- Connection with residual pressure: after draining the pressure with the knob
- Disconnection with residual pressure: after draining the pressure with the knob
- Threads available: 3/4 JIC for pressure lines, 3/8 SAE for drain line
- Threads on request: metric DIN, ORFS, SAE, BSP and others
- Surface treatment: CrIII zinc plated
- Seals: standard in NBR (Nitrile), POM
- Anti-extrusion rings: PTFE

Main Applications

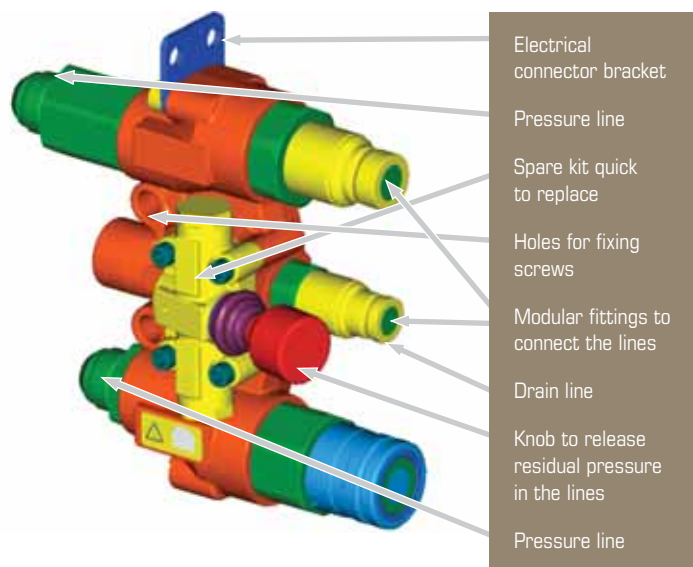
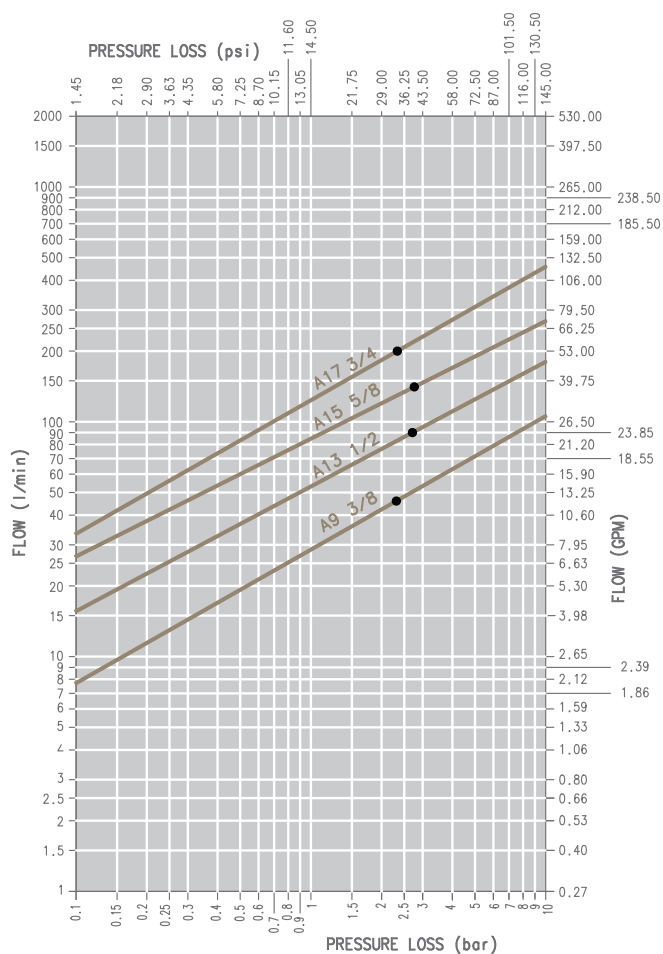
- Skid steers
- Excavators
- Mobile construction equipment
- Mini-excavators

Features & Options

- User-friendly relief system allows for easy connection/disconnection with residual pressure
- Drain the residual pressure before connection and disconnection, allowing the connection without pressure and without effort in order to reduce injury risk
- Equipped with ISO 16028 interchangeable size 1/2 male & female parts flat face. Drain line in the middle is 3/8 size male.
- Direct replacement for other connect under pressure systems
- Low cost field replacement couplers
- Modular design allows for optional size 5/8 or 3/4 body male & female for high flow circuits and 1/2 drain line

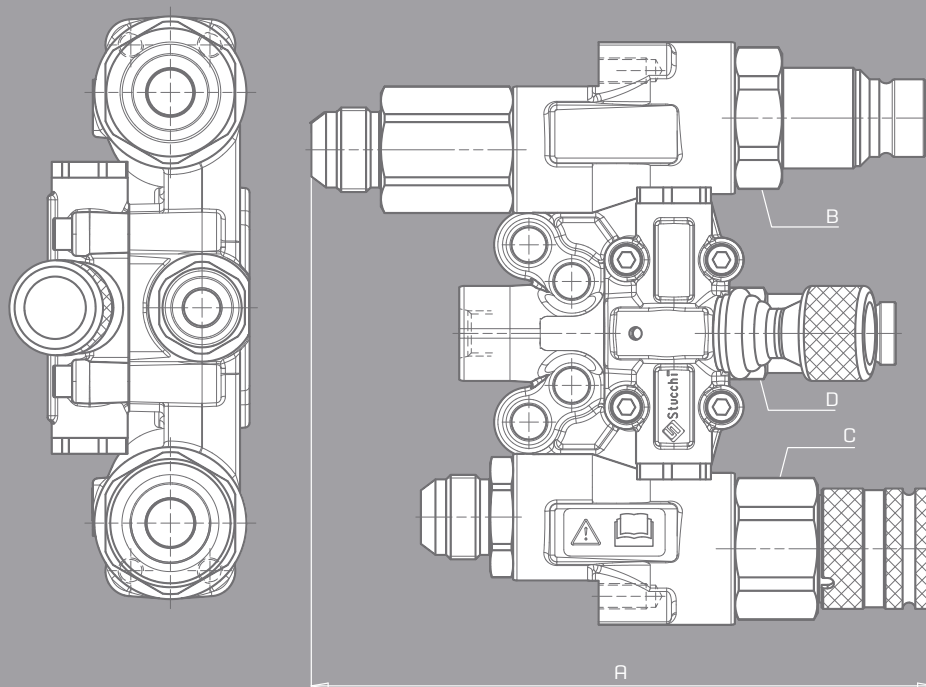
DESCRIPTION	SIZE	MAX. OPERATING PRESSURE COUPLED		MAX. RESIDUAL PRESSURE DURING CONNECTION		SPILLAGE*
		MPa	psi	MPa	psi	
SATURN BLOCK 13	1/2	35	5075	25	3625	0.020
SATURN BLOCK 15	5/8	35	5075	25	3625	0.026
SATURN BLOCK 17	3/4	35	5075	25	3625	0.032

* SPILLAGE IS AN INDICATIVE VALUE OF THE FLUID LOSS PER COUPLE-UNCUPLE CYCLE.





Saturn Block: Size Diagram



DESCRIPTION	SATURN BLOCK CODE	BODY SIZE	UNIT	A	B	C	D	UP	DRAIN	DOWN	UNIT	WEIGHT
SATURN BLOCK 13	808800102	1/2	mm	196.8	41	41	27	DN 12.5	DN 10	DN 12.5	Kg	4.312
			inch	7.75	1.61	1.61	1.06	1/2	3/8	1/2	lb	9.506
SATURN BLOCK 15	808800103	5/8	mm	203.7	41	41	27	DN 16	DN 10	DN 16	Kg	4.437
			inch	8.02	1.61	1.61	1.06	5/8	3/8	5/8	lb	9.782
SATURN BLOCK 17	808800104	3/4	mm	224	46	46	32	DN 19	DN 12.5	DN 19	Kg	5.052
			inch	8.82	1.81	1.81	1.26	3/4	1/2	3/4	lb	11.138

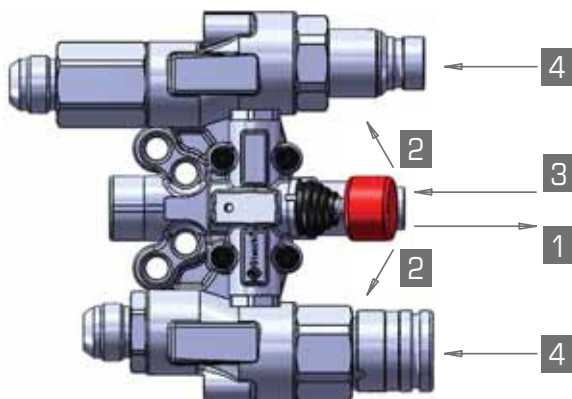
Saturn Block: Order Codes

DESCRIPTION	ORDER CODE	BODY SIZE: COUPLER & NIPPLE	DRAIN LINE SIZE
SATURN BLOCK 13	808800102	1/2	3/8
SATURN BLOCK 15	808800103	5/8	3/8
SATURN BLOCK 17	808800104	3/4	1/2
SATURN BLOCK 17	808800105	3/4	3/8

* USE "R" SUFFIX TO REVERSE POSITIONS OF COUPLER & NIPPLE IN THE SATURN BLOCK



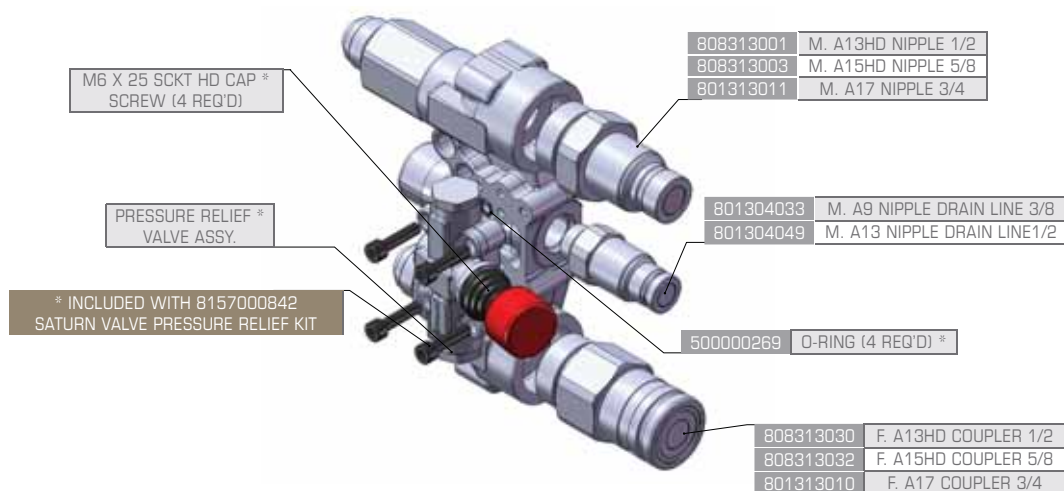
Saturn Block: How to Relieve Pressure



How to Operate the Pressure Relief Valve on the Saturn Block

1. Pull red knob on pressure relief valve out
2. Pull red knob up/down to relieve pressure
3. Release red knob, allowing it return to starting position
4. Insert coupler/nipple into the Saturn Block

Saturn Block: Replacement Parts List



PART	ORDER CODE	DESCRIPTION
COUPLER	808313030	F. A13HD COUPLER
NIPPLE	808313001	M. A13HD NIPPLE
COUPLER	808313032	F. A15HD COUPLER
NIPPLE	808313003	M. A15HD NIPPLE
COUPLER	801313010	F. A17 COUPLER
NIPPLE	801313011	M. A17 NIPPLE
NIPPLE	801304033	M. A9 NIPPLE DRAIN LINE
NIPPLE	801304049	M. A13 NIPPLE DRAIN LINE
VALVE KIT	815700852	SATURN VALVE RELIEF KIT *



Stucchi[®]



Stucchi | 1107 Windham Parkway | Romeoville, IL 60446 USA | 847.956.9720 | fax 847.956.9723 | www.stucchiusa.com
Stucchi Inc, Canada Warehouse | 6300 Viscount Road, Unit 1A | Mississauga, ON L4V 1H3