

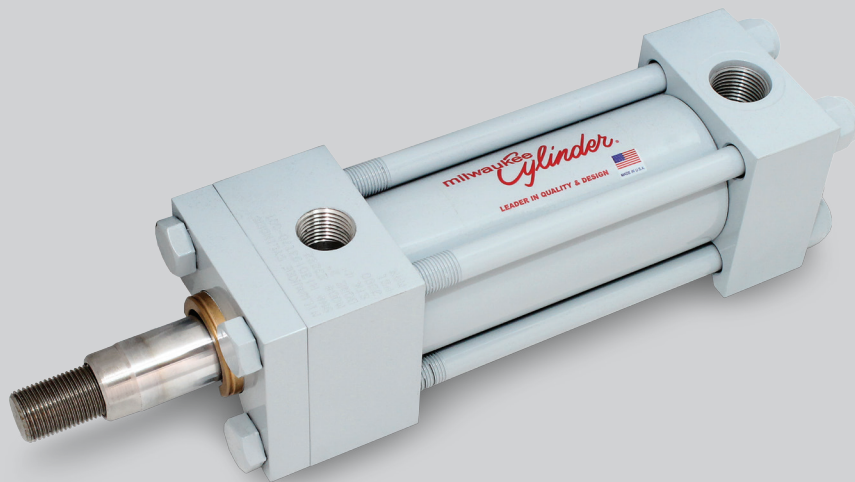
milwaukee
Cylinder

Specials are Our Standard



Functional Safety SIL 3* Capable Hydraulic Cylinders:

Available for H and MH Series
Tie Rod Cylinders**



**Proven
Durability
for the
Toughest
Applications**



**Certified reliability
for safety applications.**

* Per IEC 61508:
"Functional Safety of
Electrical/Electronic/
Programmable Electronic
Safety-related Systems"

** SIL 3 is an option and
must be requested.
Available on all standard
H & MH Series Cylinders
except pivot mount styles.

SAFETY INTEGRITY LEVEL (SIL)

A key factor defined and used in the IEC 61508 standard is Safety Integrity Level or "SIL". SIL offers an objective rating that represents how well a product development process prevents "Systematic" failures and how well a product's design offers resistance against "random" failures, given assumed operating conditions. In simpler terms, SIL is a measure of reliability of the product. IEC 61508 defines SIL in categories from 1 to 4, with 4 providing the highest level of reliability.

CERTIFICATION

Series H and Series MH Cylinders* have been assessed per the relevant requirements of IEC 61508:2010 Parts 1-7 and meets requirements providing a level of integrity to:

Systematic Capability: SC 3 (SIL 3 Capable)
Random Capability: Type A, Route 2h Device

See Safety Manual for additional details and restrictions.

* Applies to all standard mounts except rotational mounts.

Information for Designers

All required SIL 3 design information is found in our FMEDA Analysis Document and Safety Manual – both available through Milwaukee Cylinder Customer Service.



LOOK FOR THE MARK

Milwaukee Cylinder marks all SIL 3 Option product with the SIL 3 Certification stamp.

3RD PARTY CERTIFICATION:

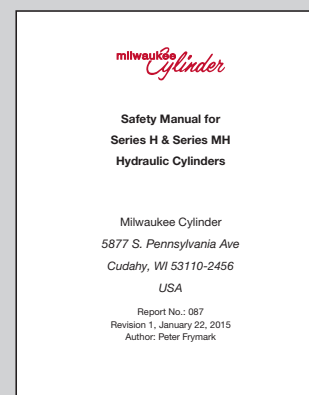
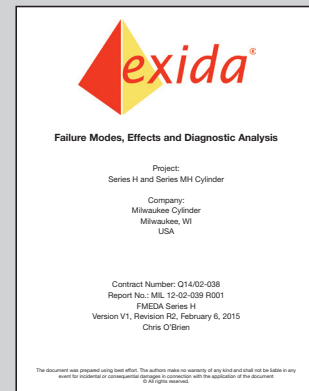
Milwaukee Cylinder SIL 3 options has been certified by *exida*.

To achieve this certification, applicable Milwaukee Cylinder designs were subject to a detailed reliability analysis by *exida* experts. This analysis demonstrated the applicable product designs met the stringent SIL 3 requirements. In addition, Milwaukee Cylinder design, operations, and quality processes to be used in its SIL 3 products were audited by *exida* as part of the certification, and were found to meet the rigorous SIL 3 standards.

exida is a leading global supplier of functional safety products, services, and certifications. *exida* corporate offices are located in Sellersville, PA. www.exida.com

Your *Milwaukee Cylinder* Distributor

www.milwaukeeecylinder.com • sales@milwaukeeecylinder.com
phone 414.769.9700 • fax 414.769.0157



Due to manufacturing processes and product improvements, please check website for the latest updates of products.

05-070001815
© 2015 Milwaukee Cylinder

