



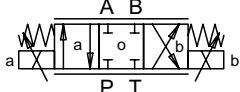
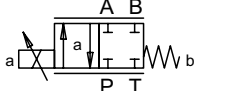
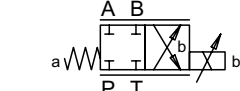
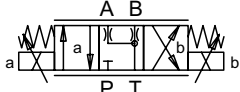
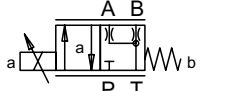
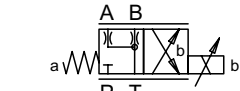
**ELECTRICAL SPECIFICATIONS**

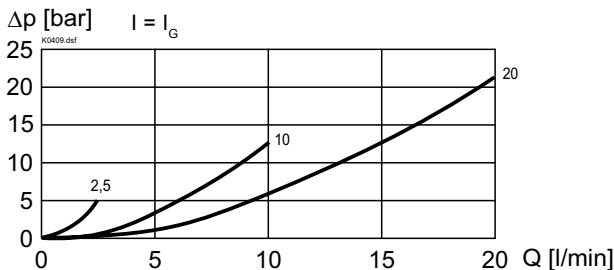
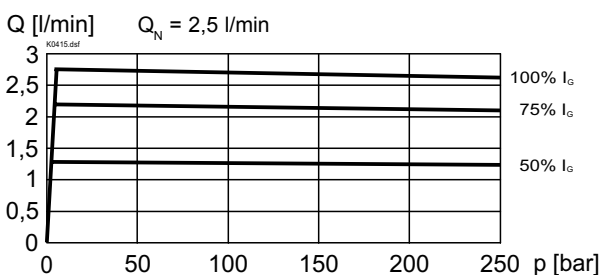
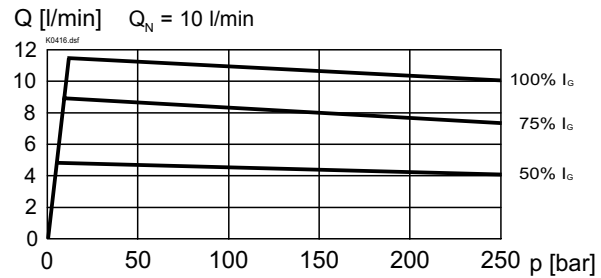
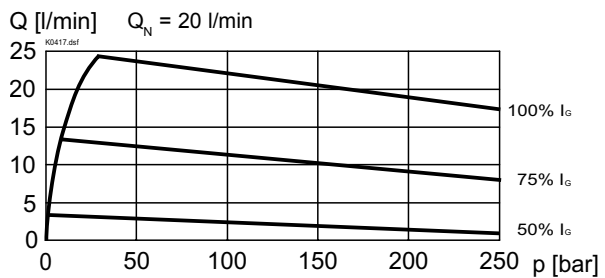
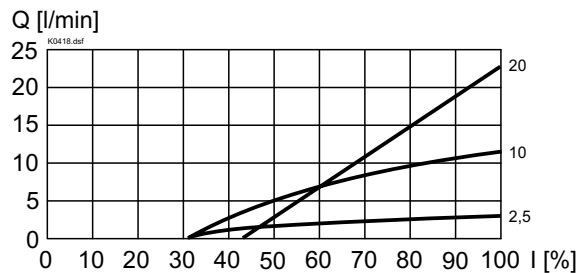
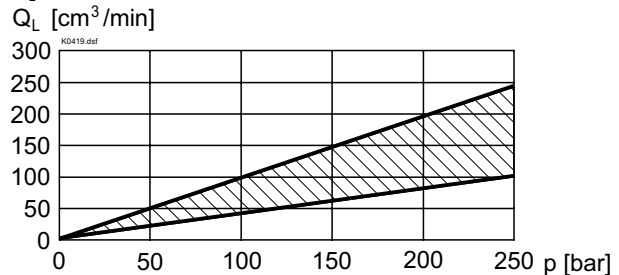
Construction Proportional solenoid, wet pin push type, pressure tight.

Standard-Nominal voltage	U = 12 VDC	U = 24 VDC	
Limiting current: PI35V PI45V	I <sub>G</sub> = 1250 mA	I <sub>G</sub> = 680 mA	for VWS4.61 Q <sub>N</sub> 2,5...10 l/min
	I <sub>G</sub> = 1780 mA	I <sub>G</sub> = 810 mA	for VWS4.61 Q <sub>N</sub> 15...20 l/min for VWS4.62 Q <sub>N</sub> 2,5...15 l/min

Relative duty factor 100% DF (see data sheet 1.1-430)  
 Protection class IP 65 to DIN 40050  
 Connection/Power Over device plug connection to supply  
 ISO 4400/DIN 43650 (2P+E)  
 Other electrical specifications see data sheet: 1.1-115 (PI35V)  
 1.1-130 (PI45V)

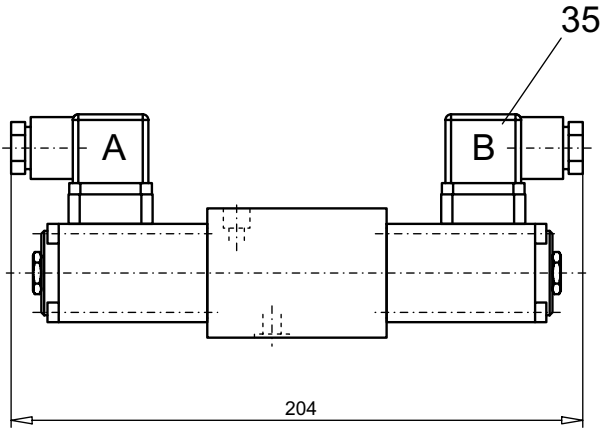
**TYPE CHARTS/DESIGNATIONS OF SYMBOLS**

	D61
	Z61a
	Z61b
	D62
	Z62a
	Z62b

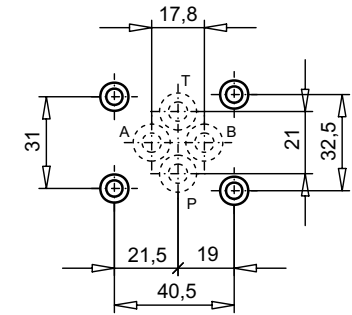
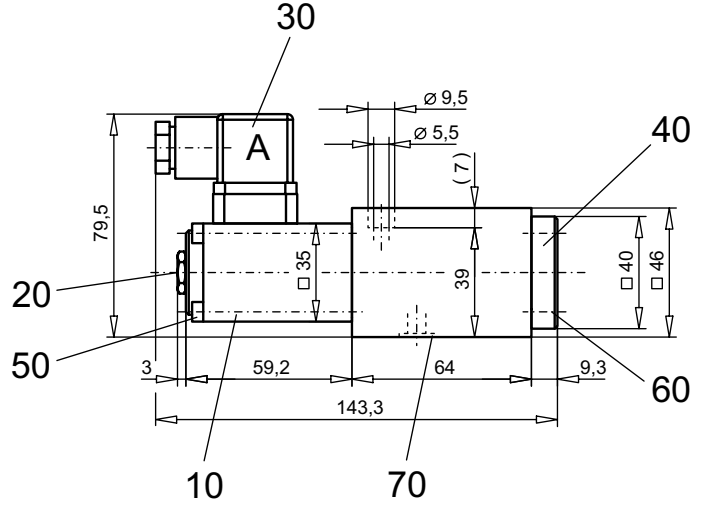
**CHARACTERISTICS** oil viscosity  $\nu = 30 \text{ mm}^2/\text{s}$ 
 $\Delta p = f(Q)$  Pressure loss/flow-characteristics over 2 metering edges

 $Q = f(p)$  Volume flow-pressure-characteristics

 $Q = f(p)$  Volume flow-pressure-characteristics

 $Q = f(p)$  Volume flow-pressure-characteristics

 $Q = f(I)$  Volume flow-signal-characteristics

 $Q_L = f(p)$  Leakage volume flow characteristics per control edge


**DIMENSIONS**

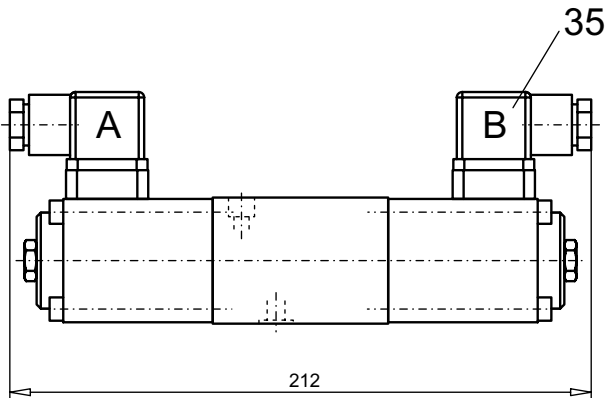
4/3-way valve VWS4.61 for  $Q_N 2,5 \dots 10$  l/min



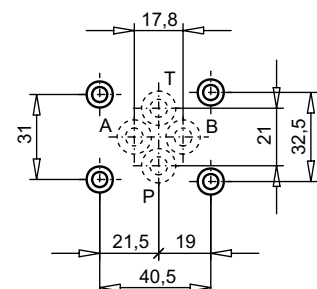
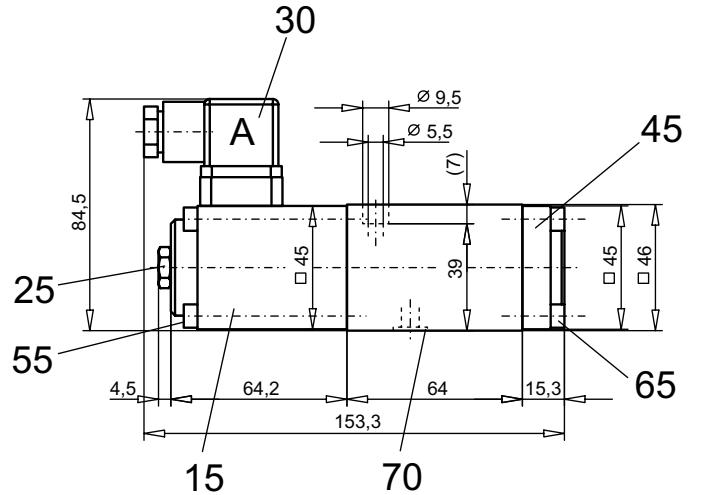
4/2-way valve VWS4.61 for  $Q_N 2,5 \dots 10$  l/min



4/3-way valve VWS4.61 for  $Q_N 15 \dots 20$  l/min  
4/3-way valve VWS4.62 for  $Q_N 2,5 \dots 15$  l/min



4/2-way valve VWS4.61 for  $Q_N 15 \dots 20$  l/min  
4/2-way valve VWS4.62 for  $Q_N 2,5 \dots 15$  l/min



**PARTS LIST**

Position	Article	Description
10	256.3453 256.3423	Proportional solenoid PI35V-G24 Proportional solenoid PI35V-G12
15	256.4453 256.4423	Proportional solenoid PI45V-G24 Proportional solenoid PI45V-G12
20	253.8000	Plug with integrated manual override HB4,5
25	253.8001	Plug with integrated manual override HB6
30	219.2001	Plug A (grey)
35	219.2002	Plug B (blac)
40	60.2200	Cover
45	58.4100	Cover
50	246.1160	Socket head cap screw M4x60 DIN 912
55	249.2000	Socket head cap screw M5x60
60	246.1110	Socket head cap screw M4x10 DIN 912
65	246.2116	Socket head cap screw M5x16 DIN 912
70	160.2093	O-ring ID 9,25x1,78

**ACCESSORIES**

Sub-plates	register 1.9
Proportional-amplifier	register 1.13

Explications techniques voir feuille 1.0-100E